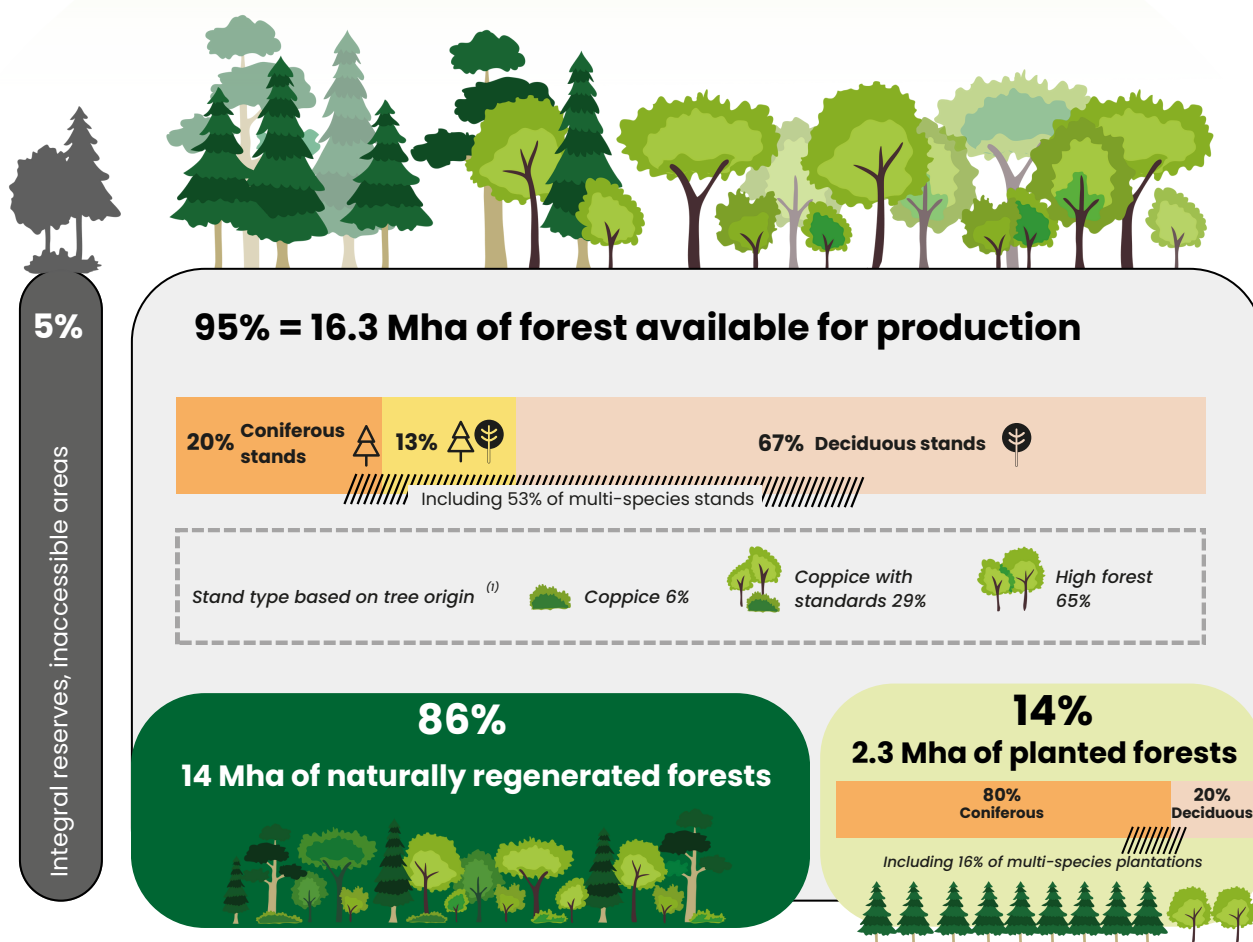


# Planted forest, general figures

## FRANCE

**17.3 Mha of forest in metropolitan France (covering 31% of the territory)**

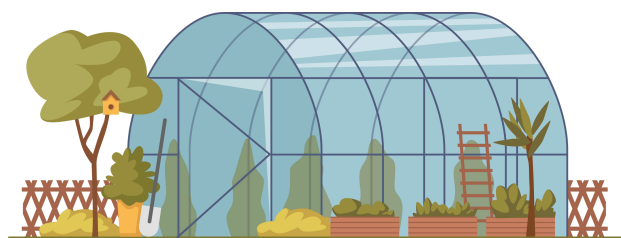


\*Mha : Million of hectares

Plantation is therefore **a minority forest renewal method in France**, as natural regeneration is still widely favored. Moreover, it is associated with a very specific facies, favoring the use of softwoods, and is found mainly in areas that are easy to manage, which is why planted forests are unevenly distributed across the country (Landes de Gascogne, Haut-Languedoc, Massif Central, Jura and Vosges). Planted forests are equally found in both private and public properties.

(1) High stands are made up of trees grown from seed, while coppice stands are made up of offshoots. These two systems can also be mixed, in the form of coppice with standards. High stands account for 81% of the total volume of standing timber, compared with only 19% for coppice.

## The plantation dynamic



**43 000 ha**

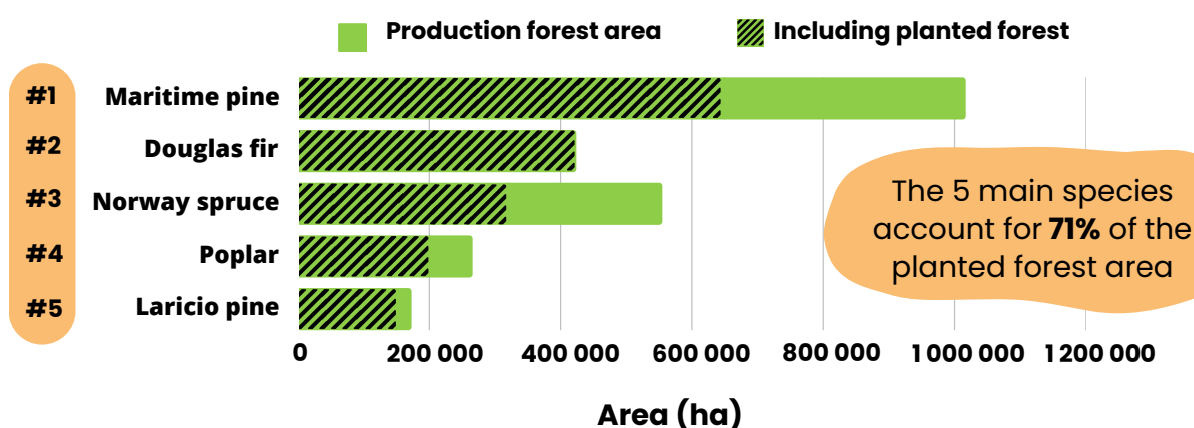
of forest are renewed by plantation each year

**60 millions**

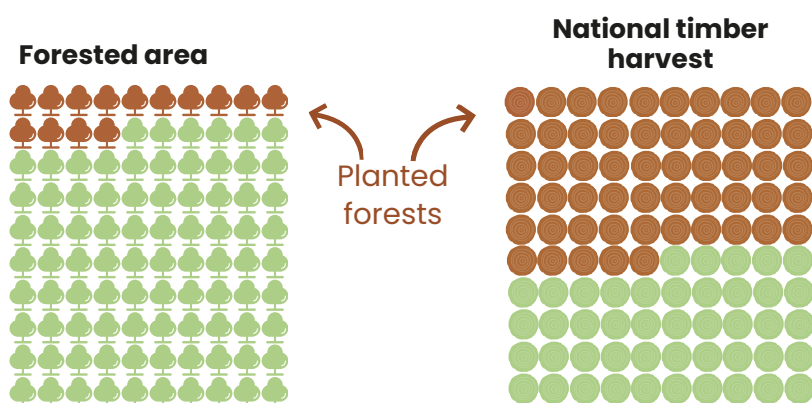
of forestry seedlings sold in France in 2021 for planting purposes. The act of planting requires great care in selecting the best seeds and planting them in the best conditions.

Planted forests contribute very little to the expansion of the French forest (+ 0.5%/year, mainly from natural colonization).

## The main species found in planted forests



## Contribution of planted forests to the bioeconomy



Although they occupy a small surface area, planted forests make a significant contribution to the national wood harvest, helping to support the ecological transition.

### References

Inventaire Géographique National, campagnes annuelles 2018-2022  
 La Feuille de l'Inventaire Forestier, La forêt plantée en France: état des lieux, mai 2017, N°40  
 IRSTEA, Statistiques annuelles sur les ventes de graines et de plants forestiers  
 FAO, Assessment of industrial roundwood production from planted forests, 2014